





Opposites attract

Quite but strong. Cool, yet hot at the same time.
Subtle, but also wild.

This minimalism has many facets. Its subtleties are
revealed at second glance. Statements, intelligently
placed.

Hot Break

Unique Highlights are still valid:
Stylebreaks will also be of importance for the future.
This way calm and individual pieces and genuine classics gain excitement.



Cool Chic

Suits are moving on to the next level. They are loosening up and showing a soft, relaxed side. At the same time they are having a facelift through a more prominent waist and focus on the shoulder area.



Subtle Drama

In addition to glam bam, other aspects are also becoming more important. The art of tailoring, for example. Silhouette. Sophistication. And the staging skill to create targeted rays of light on a dark stage. This creates extraordinary radiance in peace and quiet.





Wild affair

There are loves that last forever. Lovers of leopard prints will not be dissuaded from their object of desire. Minimalism or not - a hot touch of animal is always welcome.





Denim Rebel

If blue is the colour of hope anyway, then all the more hope rests on it now. Denim is making a fierce return to the stage: street style is upgrading many looks, giving them youth, strength and coolness.

Cosy Spirit

Teddy, fur, lambskin: voluminous cosy pieces dominate the runways.



Glam Classics

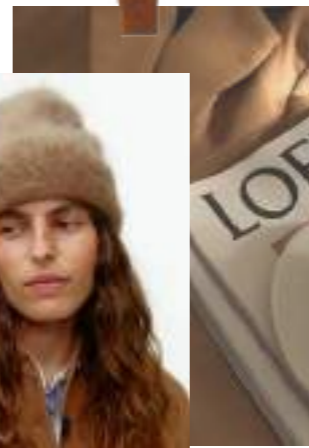
Those who can mix and match have a clear advantage. Where bold nonchalance is combined with quiet classicism and radiant glamour to create such a natural look - this shows how fashion is constantly taking new twists from the supposedly familiar.





ROSE REVERIE





french pink

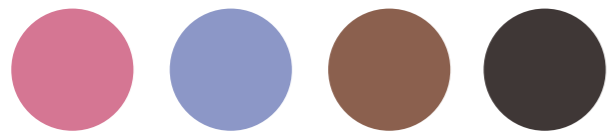
frosty lavender

caramel spice

espresso

Rose Reverie

Winter is arriving. The new season begins like a dream. The sun sets earlier and earlier, lower and lower - and paints magical pictures in the sky. In blue, purple and pink. Like a sea full of flowers.

















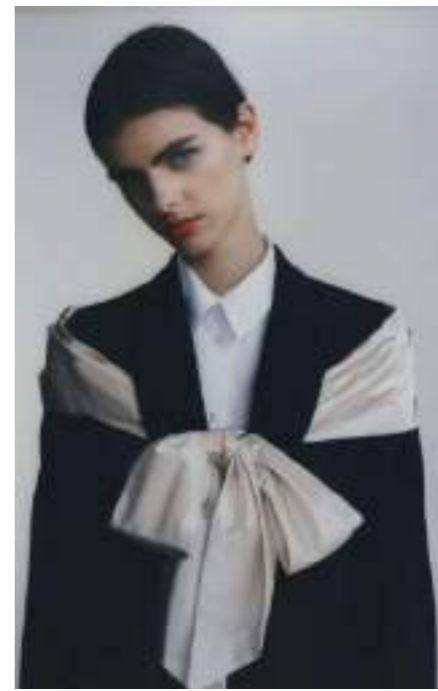


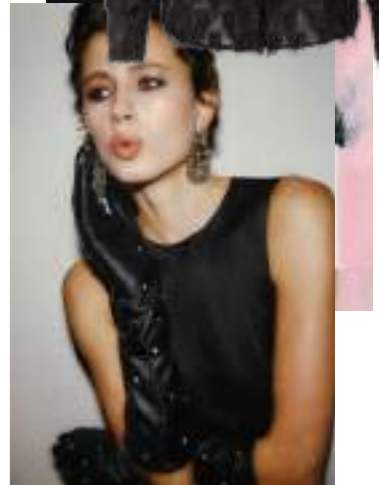






Mistletoe Magic





frozen rose

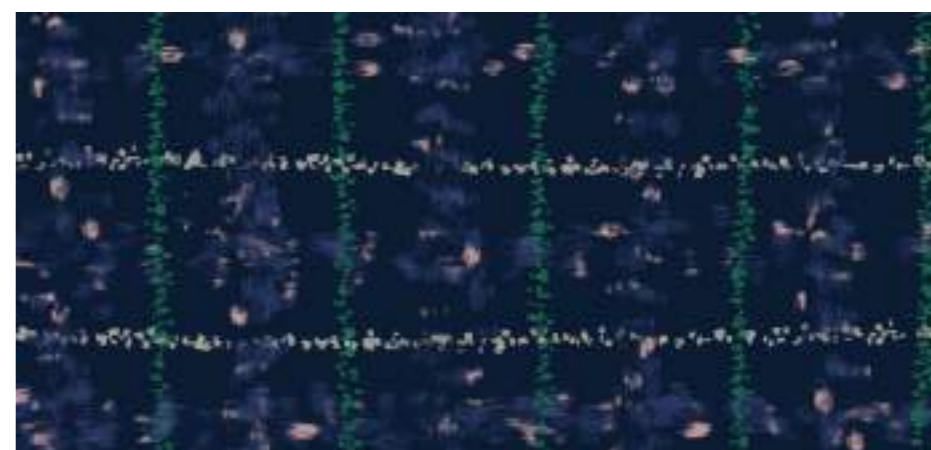
matcha

midnight jade

black

Mistletoe Magic

Slow down! This is the beginning of a magical time when the clock slows down and one comes to rest. As the year draws to a close, Christmas and New Year's Eve - the festive season - are not far away. Time for the first preparations. Time to look forward to the festive season with family and friends.



















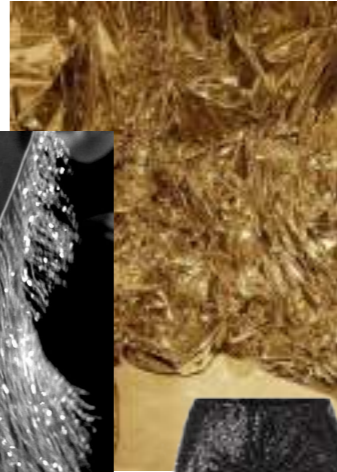






PARTY
ROYAL





frozen rose

matcha

silver

black

gold

PARTY ROYAL

Time to shine! The festive season is just around the corner. It will glitter and shine. It's going to be glamorous. To end the year in style, the motto for the festive season is: Party - but make it Rich & Royal.









